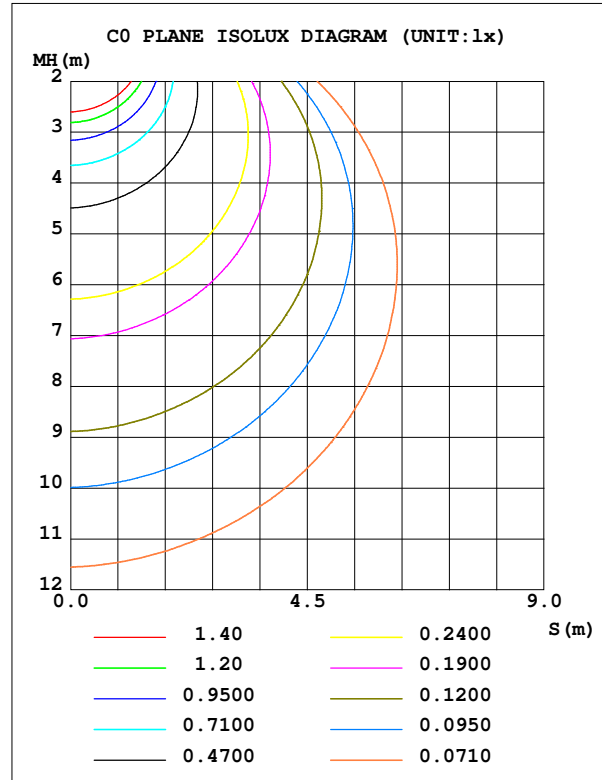
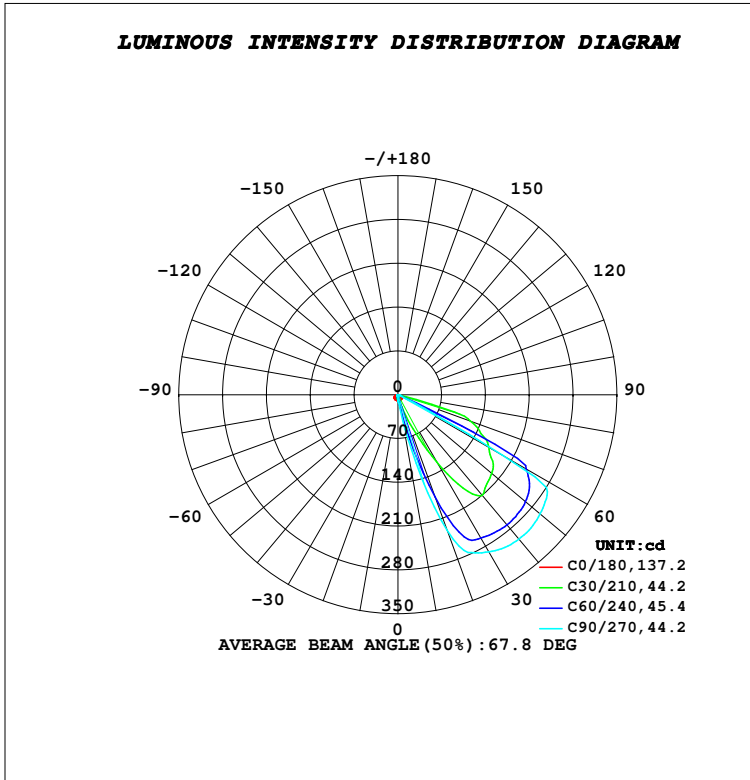


LUMINAIRE PHOTOMETRIC TEST REPORT

Test:U:230.15V I:0.0281A P:6.3440W PF:0.9799 Freq:50.00Hz Lamp Flux:1746.26x1 lm		
NAME: SUDO - ASY FRAME	TYPE:PATH FINDERS	WEIGHT:0.730kg
SPEC.:5700K,NICHIA,CRI 80	DIM.: 255 x 87 x 76	SERIAL No.:INT/2023/11/150
MFR.: K-LITE	SUR.:	Shielding Angle:

DATA OF LAMP		PHOTOMETRIC DATA				Eff: 54.30 lm/W
MODEL	KL-2757	I _{max} (cd)	301.4	S/MH (C0/180)		1.46
NOMINAL POWER (W)	6	LOR (%)	19.7	S/MH (C90/270)		0.21
RATED VOLTAGE (V)	230	TOTAL FLUX (lm)	344.49	η UP, DN (C0-180)		0.0, 19.4
NOMINAL FLUX (lm)	1746.26	CIE CLASS	DIRECT	η UP, DN (C180-360)		0.0, 0.3
LAMPS INSIDE	1	η up (%)	0.0	CIBSE SHR NOM		0.00
TEST VOLTAGE (V)	230	η down (%)	19.7	CIBSE SHR MAX		1.00



C Range: 0 - 360DEG
 C Interval: 10.0DEG
 Test Speed: HIGH
 Temperature: 25.5DEG
 Operators:K-LITE
 Test Date:17 November 2023

γ Range: 0 - 90DEG
 γ Interval: 1.0DEG
 Test System:EVERFINE GO-R5000_V2 SYSTEM V2.00.417
 Humidity: 47.1%
 Test Distance:1.935m [K=1.0000]
 Remarks: