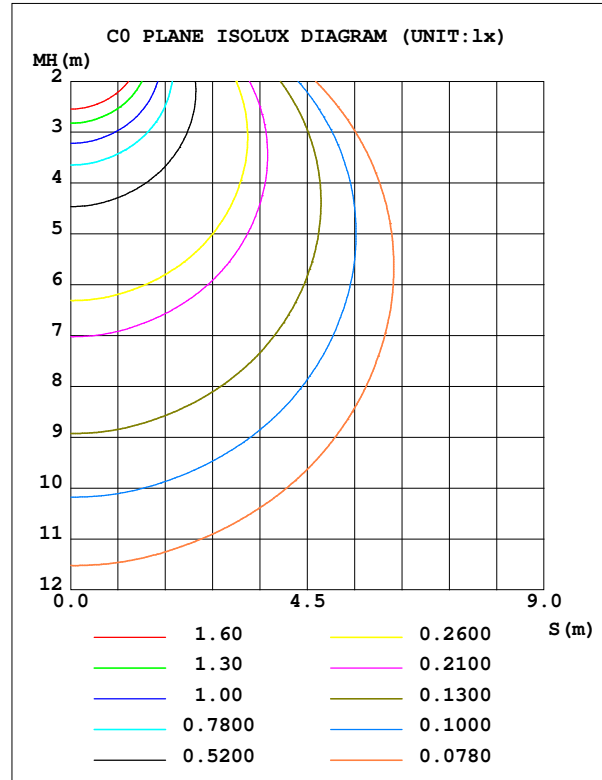
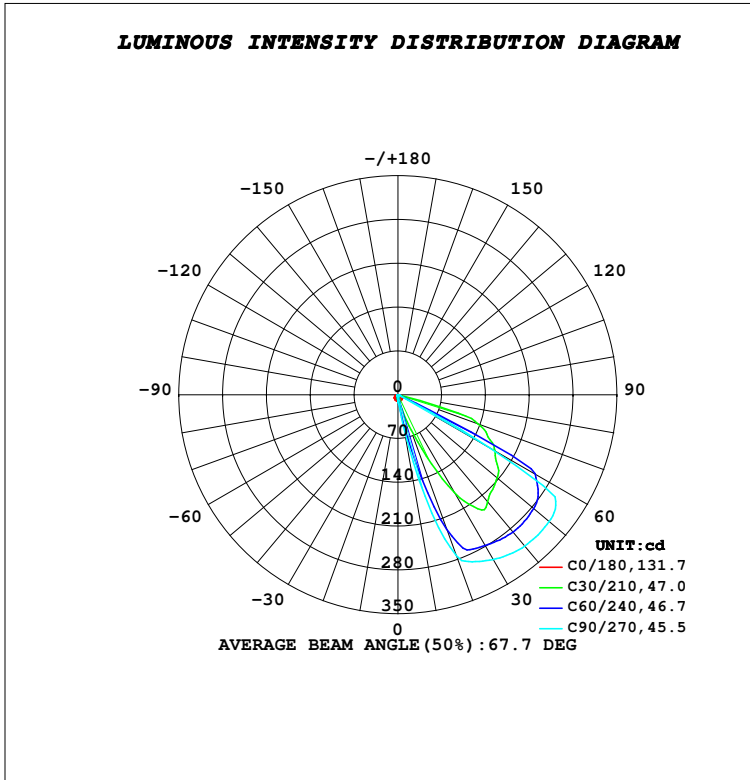


LUMINAIRE PHOTOMETRIC TEST REPORT

Test:U:230.17V I:0.0285A P:6.4332W PF:0.9803 Freq:49.98Hz Lamp Flux:993.984x1 lm		
NAME: SUDO - ASY FRAME	TYPE:PATH FINDERS	WEIGHT:0.730kg
SPEC.:4000K,NICHIA,CRI 80	DIM.: 255 x 87 x 76	SERIAL No.:INT/2023/11/48
MFR.: K-LITE	SUR.:	Shielding Angle:

DATA OF LAMP		PHOTOMETRIC DATA				Eff: 55.65 lm/W
MODEL	KL-2757	I _{max} (cd)	316.7	S/MH (C0/180)		1.35
NOMINAL POWER (W)	6	LOR (%)	36.0	S/MH (C90/270)		0.22
RATED VOLTAGE (V)	230	TOTAL FLUX (lm)	357.98	η UP, DN (C0-180)		0.0, 35.4
NOMINAL FLUX (lm)	993.984	CIE CLASS	DIRECT	η UP, DN (C180-360)		0.0, 0.6
LAMPS INSIDE	1	η up (%)	0.0	CIBSE SHR NOM		0.00
TEST VOLTAGE (V)	230	η down (%)	36.0	CIBSE SHR MAX		1.00



C Range: 0 - 360DEG
 C Interval: 10.0DEG
 Test Speed: HIGH
 Temperature: 25.1DEG
 Operators:K-LITE
 Test Date:08 November 2023

γ Range: 0 - 90DEG
 γ Interval: 1.0DEG
 Test System:EVERFINE GO-R5000_V2 SYSTEM V2.00.417
 Humidity: 40.3%
 Test Distance:1.935m [K=1.0000]
 Remarks: