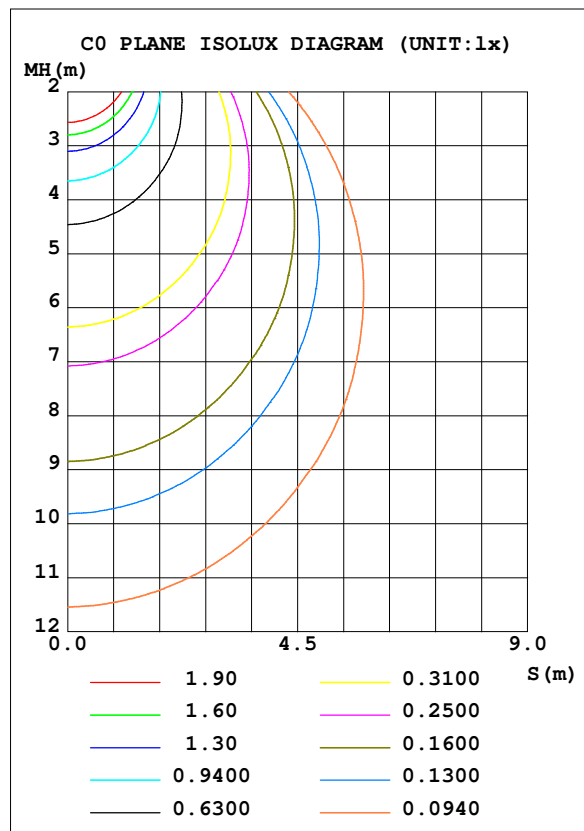
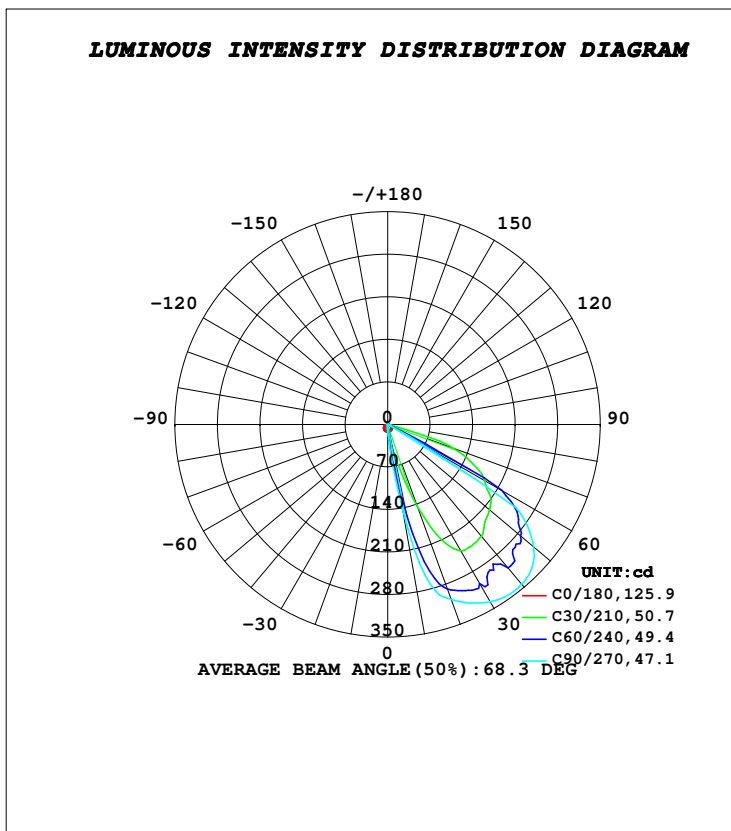


LUMINAIRE PHOTOMETRIC TEST REPORT

Test:U:230.47V I:0.0323A P:7.0189W PF:0.9431 Freq:50.00Hz Lamp Flux:1038.58x1 lm		
NAME: SUDO - ASY FRAME	TYPE:PATH FINDERS	WEIGHT:0.730 Kg
SPEC.:3000K, NICHIA, 80 CRI	DIM.: 255 x 87 x 76	SERIAL No.:INT/2024/07/90
MFR.: K-LITE	SUR.:	Shielding Angle:

DATA OF LAMP		PHOTOMETRIC DATA				Eff: 56.21 lm/W
MODEL	KL-2757	I _{max} (cd)	344.5	S/MH (C0/180)	1.36	
NOMINAL POWER (W)	6	LOR (%)	38.0	S/MH (C90/270)	0.17	
RATED VOLTAGE (V)	230	TOTAL FLUX (lm)	394.53	η UP, DN (C0-180)	0.0, 37.5	
NOMINAL FLUX (lm)	1038.58	CIE CLASS	DIRECT	η UP, DN (C180-360)	0.0, 0.5	
LAMPS INSIDE	1	η up (%)	0.0	CIBSE SHR NOM	0.00	
TEST VOLTAGE (V)	230	η down (%)	38.0	CIBSE SHR MAX	1.00	



C Range: 0 - 360DEG
C Interval: 10.0DEG
Test Speed: HIGH
Temperature: 24.8DEG
Operators:K-LITE
Test Date:14 August 2024

γ Range: 0 - 90DEG
γ Interval: 1.0DEG
Test System:EVERFINE GO-R5000_V2 SYSTEM V2.00.417
Humidity: 48.9%
Test Distance:2.001m [K=1.0000]
Remarks: