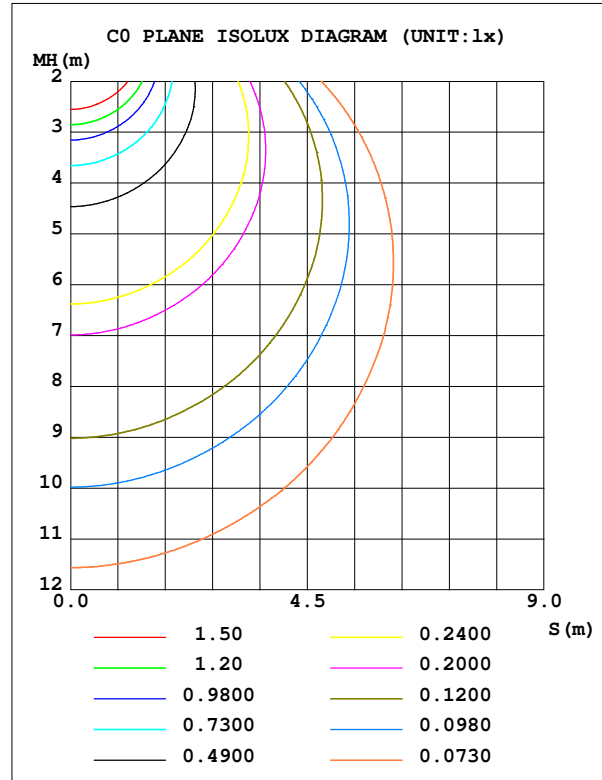
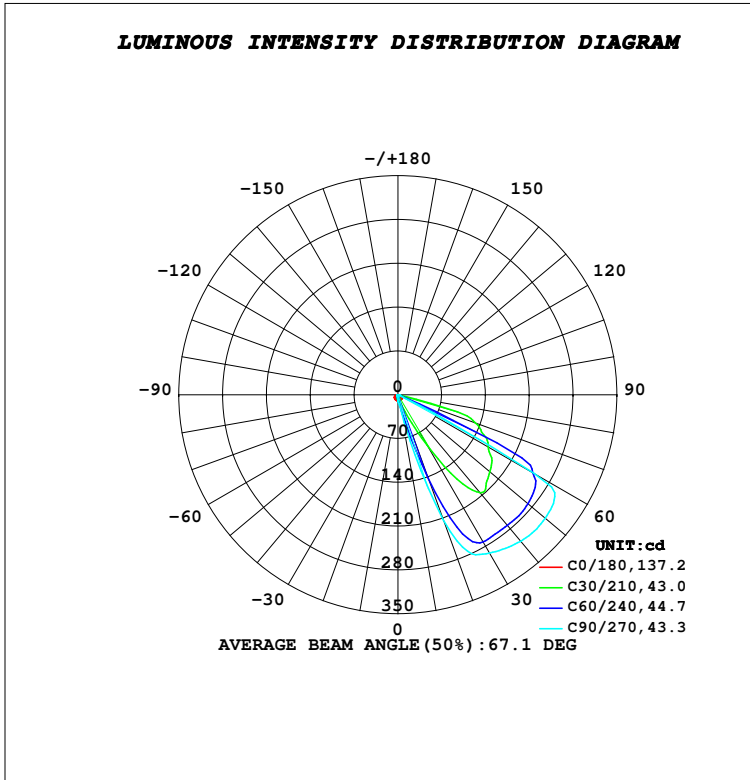


LUMINAIRE PHOTOMETRIC TEST REPORT

Test:U:230.15V I:0.0296A P:6.6831W PF:0.9819 Freq:50.00Hz Lamp Flux:973.44x1 lm		
NAME: SUDO- ASY FRAME	TYPE:PATH FINDERS	WEIGHT:0.730Kg
SPEC.:2700K, NICHIA, 80 CRI	DIM.: 255 x 87 x 76	SERIAL No.:INT/2023/10/123
MFR.: K-LITE	SUR.:	Shielding Angle:

DATA OF LAMP		PHOTOMETRIC DATA				Eff: 51.11 lm/W
MODEL	KL-2757	I _{max} (cd)	308.4	S/MH (C0/180)		1.37
NOMINAL POWER (W)	6	LOR (%)	35.1	S/MH (C90/270)		0.22
RATED VOLTAGE (V)	230	TOTAL FLUX (lm)	341.60	η UP, DN (C0-180)		0.0, 34.4
NOMINAL FLUX (lm)	973.44	CIE CLASS	DIRECT	η UP, DN (C180-360)		0.0, 0.7
LAMPS INSIDE	1	η up (%)	0.0	CIBSE SHR NOM		0.00
TEST VOLTAGE (V)	230	η down (%)	35.1	CIBSE SHR MAX		1.00



C Range: 0 - 360DEG
 C Interval: 10.0DEG
 Test Speed: HIGH
 Temperature: 24.8DEG
 Operators:K-LITE
 Test Date:03 November 2023

γ Range: 0 - 90DEG
 γ Interval: 1.0DEG
 Test System:EVERFINE GO-R5000_V2 SYSTEM V2.00.417
 Humidity: 38.8%
 Test Distance:1.900m [K=1.0186]
 Remarks: