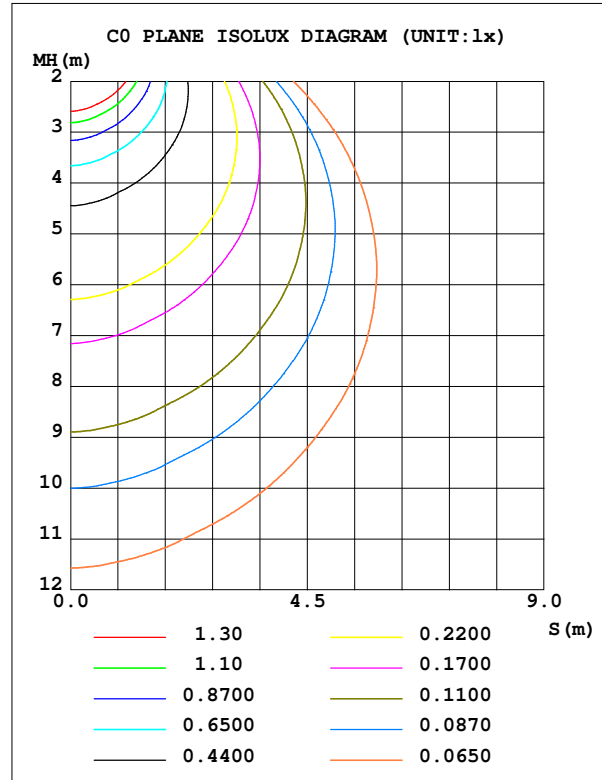
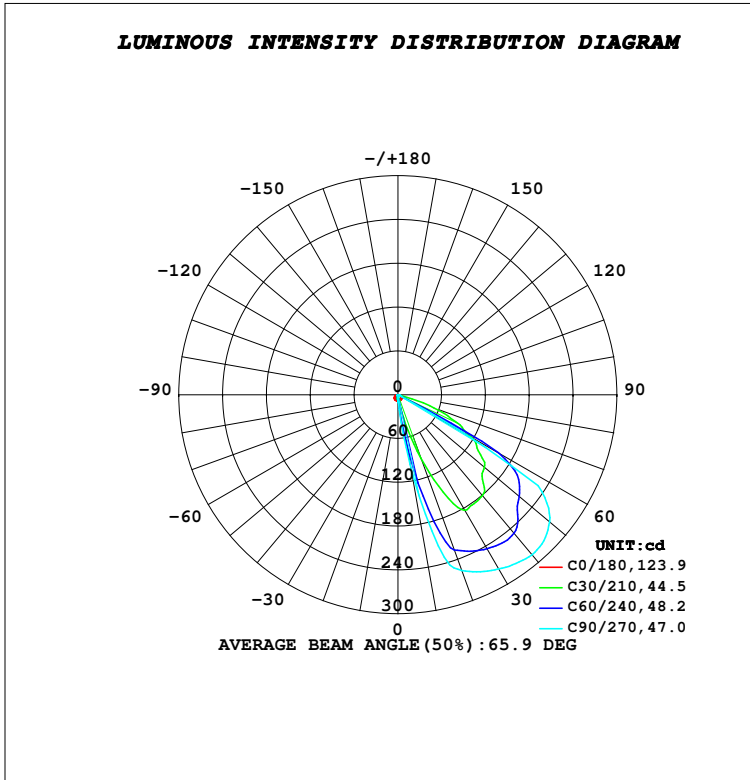


LUMINAIRE PHOTOMETRIC TEST REPORT

Test:U:230.46V I:0.0283A P:6.3888W PF:0.9807 Freq:49.99Hz Lamp Flux:984.768x1 lm		
NAME: SUDO MINI ASY FRAME	TYPE:PATH FINDERS	WEIGHT:0.390 Kg
SPEC.:4000K,NICHIA,80 CRI	DIM.: 124 x 83 x 70	SERIAL No.:INT/2023/12/06
MFR.: K-LITE	SUR.:	Shielding Angle:

DATA OF LAMP		PHOTOMETRIC DATA				Eff: 45.70 lm/W
MODEL	KL-2747	I _{max} (cd)	286.1	S/MH (C0/180)		1.40
NOMINAL POWER (W)	6	LOR (%)	29.6	S/MH (C90/270)		0.22
RATED VOLTAGE (V)	230	TOTAL FLUX (lm)	291.94	η UP, DN (C0-180)		0.0, 29.2
NOMINAL FLUX (lm)	984.768	CIE CLASS	DIRECT	η UP, DN (C180-360)		0.0, 0.4
LAMPS INSIDE	1	η up (%)	0.0	CIBSE SHR NOM		0.00
TEST VOLTAGE (V)	230	η down (%)	29.6	CIBSE SHR MAX		1.00



C Range: 0 - 360DEG
 C Interval: 10.0DEG
 Test Speed: HIGH
 Temperature: 25.6DEG
 Operators:K-LITE
 Test Date:08 December 2023

γ Range: 0 - 90DEG
 γ Interval: 1.0DEG
 Test System:EVERFINE GO-R5000_V2 SYSTEM V2.00.417
 Humidity: 46.3%
 Test Distance:1.935m [K=1.0000]
 Remarks: