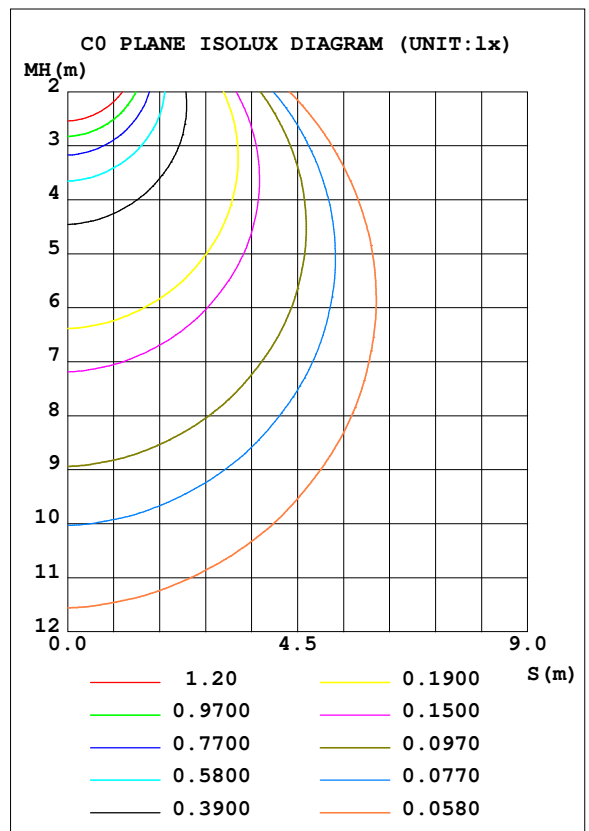
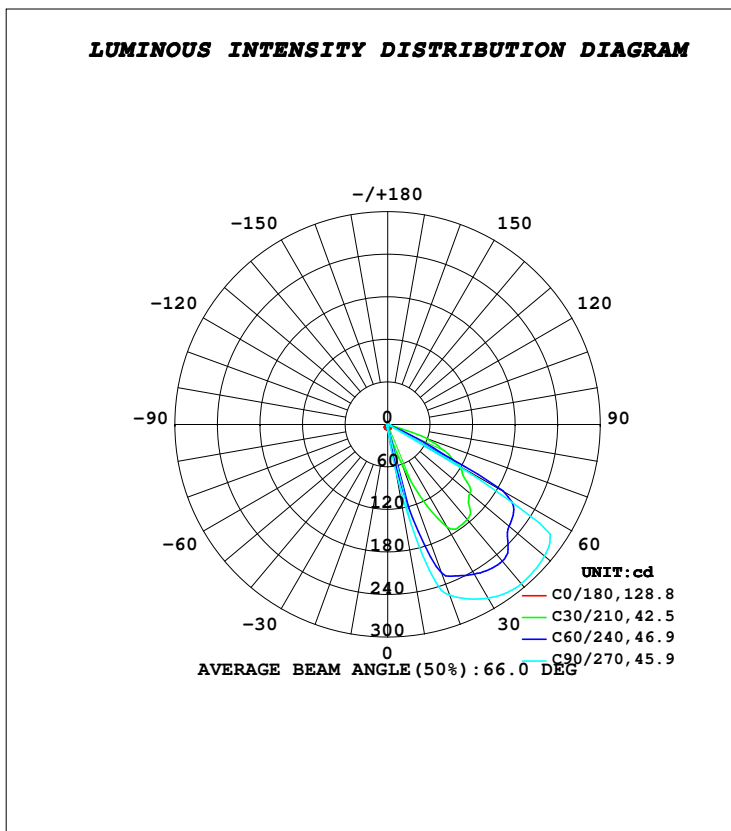


LUMINAIRE PHOTOMETRIC TEST REPORT

Test:U:229.60V I:0.0280A P:6.3038W PF:0.9800 Freq:50.00Hz Lamp Flux:864.108x1 lm		
NAME: SUDO MINI - ASY FRAME	TYPE:PATH FINDERS	WEIGHT:0.320 Kg
SPEC.:2700K, NICHIA, 80 CRI	DIM.: 130 x 87 x 76	SERIAL No.:INT/2024/07/103
MFR.: K-LITE	SUR.:	Shielding Angle:

DATA OF LAMP		PHOTOMETRIC DATA			
MODEL	KL-2747	Imax (cd)	293.2	S/MH (C0/180)	1.44
NOMINAL POWER (W)	6	LOR (%)	33.6	S/MH (C90/270)	0.27
RATED VOLTAGE (V)	230	TOTAL FLUX (lm)	290.07	η UP, DN (C0-180)	0.0, 33.0
NOMINAL FLUX (lm)	864.108	CIE CLASS	DIRECT	η UP, DN (C180-360)	0.0, 0.6
LAMPS INSIDE	1	η up (%)	0.0	CIBSE SHR NOM	0.00
TEST VOLTAGE (V)	230	η down (%)	33.6	CIBSE SHR MAX	1.00



C Range: 0 - 360DEG
C Interval: 10.0DEG
Test Speed: HIGH
Temperature: 25.4DEG
Operators: K-LITE
Test Date: 13 August 2024

γ Range: 0 - 180DEG
γ Interval: 1.0DEG
Test System: EVERFINE GO-R5000_V2 SYSTEM V2.00.417
Humidity: 39.8%
Test Distance: 2.001m [K=1.0000]
Remarks: