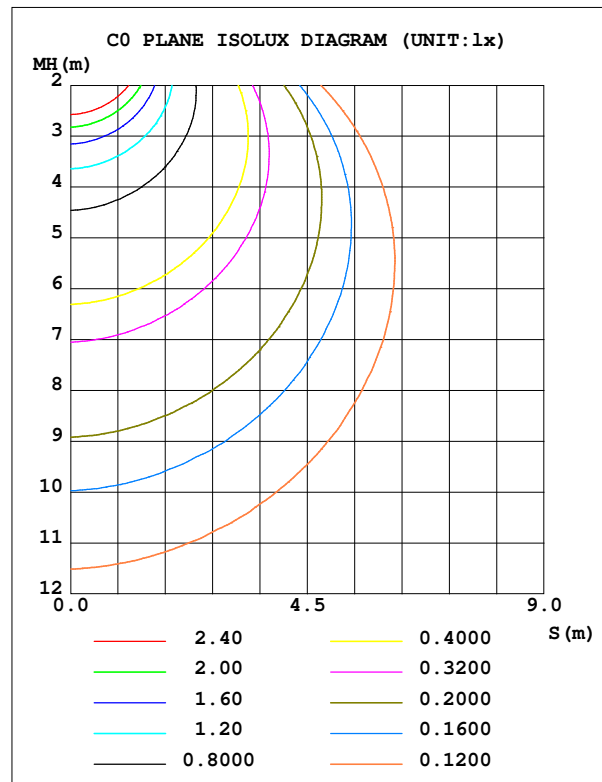
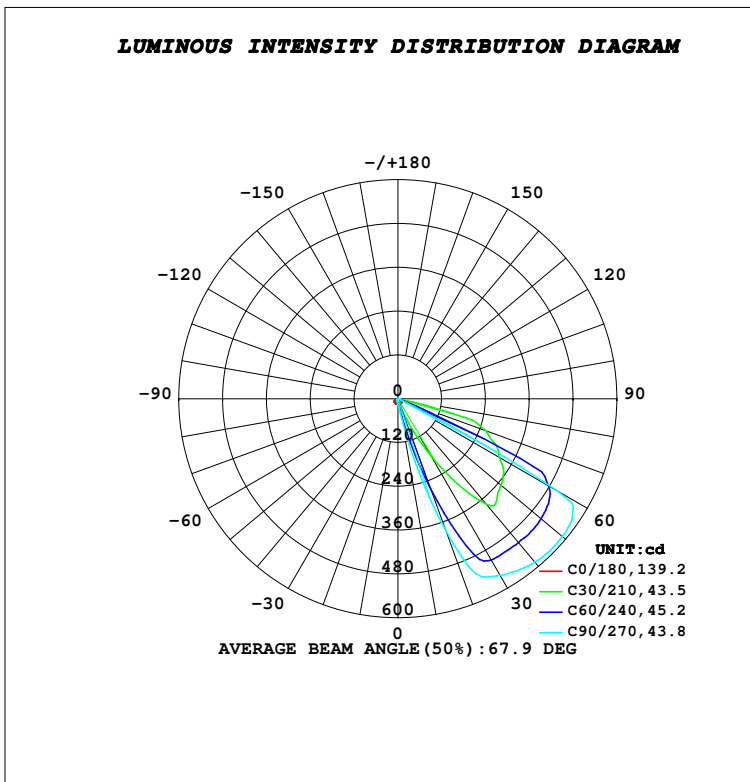


LUMINAIRE PHOTOMETRIC TEST REPORT

Test:U:230.09V I:0.0556A P:12.497W PF:0.9767 Freq:49.99Hz Lamp Flux:2165.76x1 lm		
NAME: SUDO - ASY FRAME	TYPE:PATH FINDERS	WEIGHT:0.730kg
SPEC.:5700K,NICHIA,CRI 80	DIM.: 255 x 87 x 76	SERIAL No.:INT/2023/11/102
MFR.: K-LITE	SUR.:	Shielding Angle:

DATA OF LAMP		PHOTOMETRIC DATA				Eff: 53.65 lm/W
MODEL	KL-2743	I _{max} (cd)	588.8	S/MH (C0/180)		1.44
NOMINAL POWER (W)	12	LOR (%)	31.0	S/MH (C90/270)		0.27
RATED VOLTAGE (V)	230	TOTAL FLUX (lm)	670.45	η UP, DN (C0-180)		0.0, 30.4
NOMINAL FLUX (lm)	2165.76	CIE CLASS	DIRECT	η UP, DN (C180-360)		0.0, 0.6
LAMPS INSIDE	1	η up (%)	0.0	CIBSE SHR NOM		0.00
TEST VOLTAGE (V)	230	η down (%)	31.0	CIBSE SHR MAX		1.00



C Range: 0 - 360DEG
 C Interval: 10.0DEG
 Test Speed: HIGH
 Temperature: 23.8DEG
 Operators:K-LITE
 Test Date:14 November 2023

γ Range: 0 - 90DEG
 γ Interval: 1.0DEG
 Test System:EVERFINE GO-R5000_V2 SYSTEM V2.00.417
 Humidity: 41.3%
 Test Distance:1.935m [K=1.0000]
 Remarks: