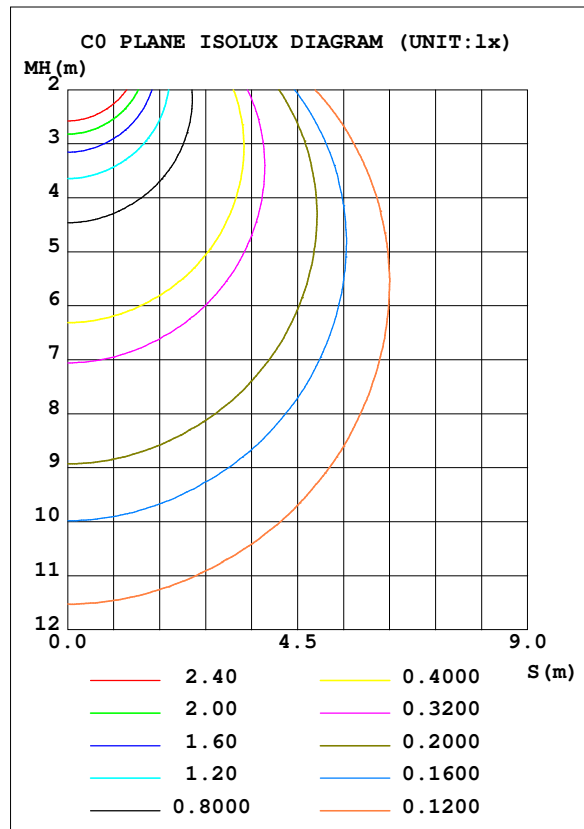
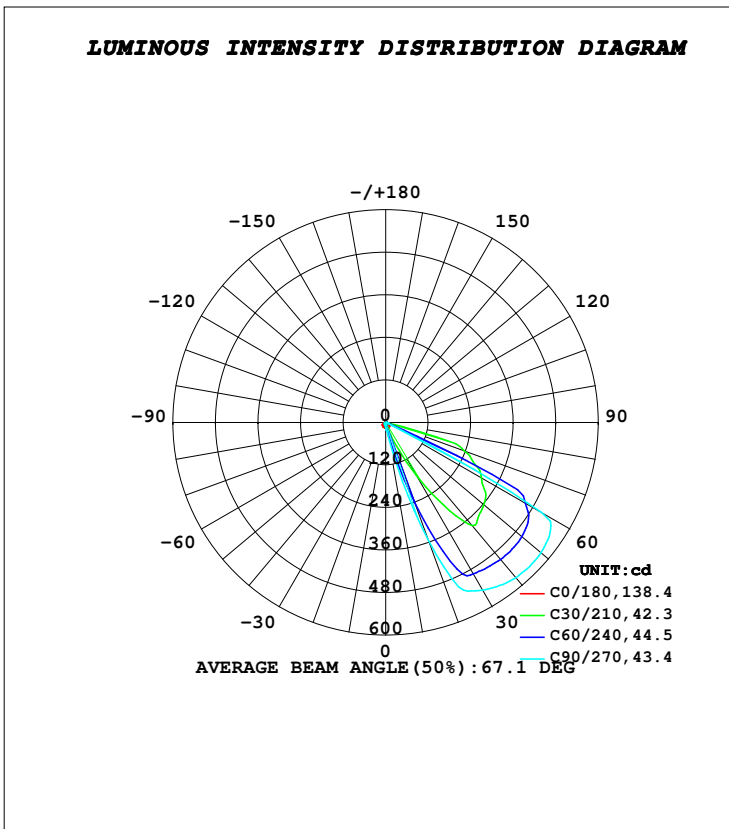


LUMINAIRE PHOTOMETRIC TEST REPORT

Test:U:230.43V I:0.0550A P:12.395W PF:0.9776 Freq:49.99Hz Lamp Flux:1494.72x1 lm		
NAME: SUDO ASY FRAME	TYPE:PATH FINDERS	WEIGHT:0.730kg
SPEC.:3000K, NICHIA, CRI 80	DIM.: 255 x 87 x 76	SERIAL No.:INT/2023/10/41
MFR.: K-LITE	SUR.:	Shielding Angle:

DATA OF LAMP		PHOTOMETRIC DATA			
MODEL	KL-2743	Imax (cd)	574.7	S/MH (C0/180)	1.35
NOMINAL POWER (W)	12	LOR (%)	42.9	S/MH (C90/270)	0.23
RATED VOLTAGE (V)	230	TOTAL FLUX (lm)	641.46	η UP, DN (C0-180)	0.0, 42.1
NOMINAL FLUX (lm)	1494.72	CIE CLASS	DIRECT	η UP, DN (C180-360)	0.0, 0.8
LAMPS INSIDE	1	η up (%)	0.0	CIBSE SHR NOM	0.00
TEST VOLTAGE (V)	230	η down (%)	42.9	CIBSE SHR MAX	1.00



C Range: 0 - 360DEG
C Interval: 10.0DEG
Test Speed: HIGH
Temperature: 25.4DEG
Operators:K-LITE
Test Date:21 October 2023

γ Range: 0 - 90DEG
γ Interval: 1.0DEG
Test System:EVERFINE GO-R5000_V2 SYSTEM V2.00.417
Humidity: 40.2%
Test Distance:1.935m [K=1.0000]
Remarks: