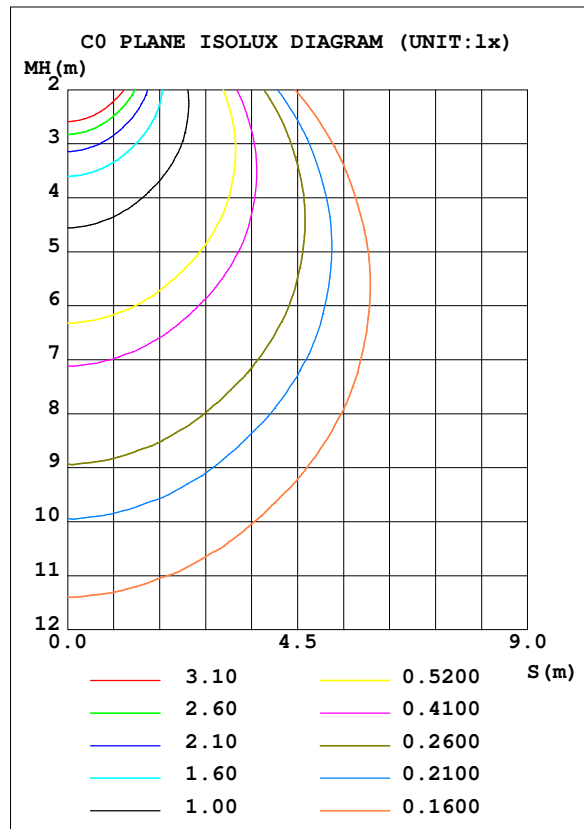
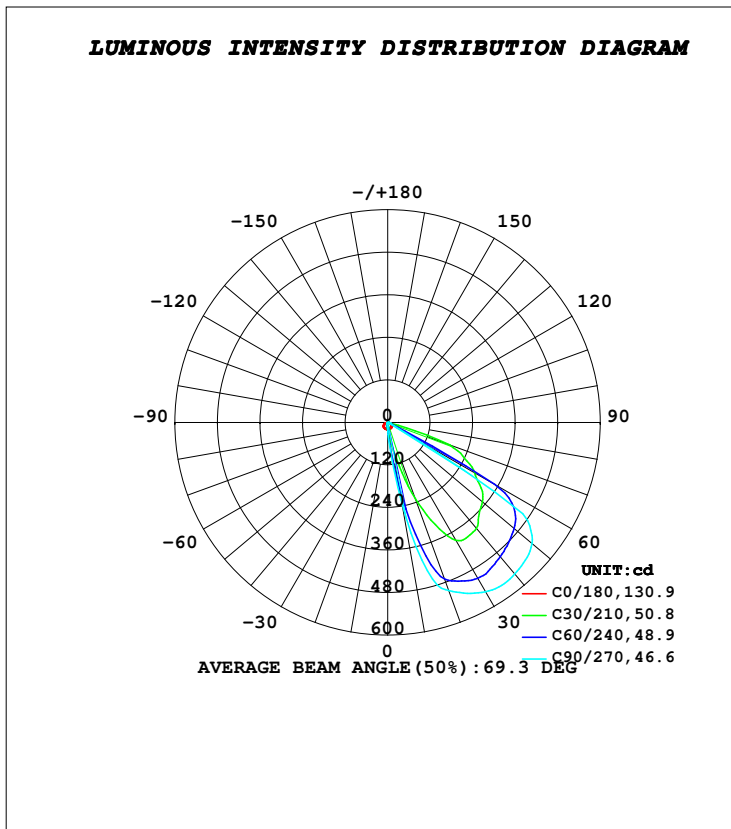


LUMINAIRE PHOTOMETRIC TEST REPORT

Test:U:230.20V I:0.0544A P:12.207W PF:0.9755 Freq:49.99Hz Lamp Flux:1780.85x1 lm		
NAME: SUDO - ASY FRAME	TYPE:PATH FINDERS	WEIGHT:0.540Kg
SPEC.:2700K, NICHIA, CRI 80	DIM.: 255 x 87 x 76	SERIAL No.:INT/2024/07/91
MFR.: K-LITE	SUR.:	Shielding Angle:

DATA OF LAMP		PHOTOMETRIC DATA			
MODEL	KL-2743	Imax (cd)	561.3	S/MH (C0/180)	1.45
NOMINAL POWER (W)	12	LOR (%)	35.8	S/MH (C90/270)	0.21
RATED VOLTAGE (V)	230	TOTAL FLUX (lm)	636.99	η UP, DN (C0-180)	0.0, 35.2
NOMINAL FLUX (lm)	1780.85	CIE CLASS	DIRECT	η UP, DN (C180-360)	0.0, 0.5
LAMPS INSIDE	1	η up (%)	0.0	CIBSE SHR NOM	0.00
TEST VOLTAGE (V)	230	η down (%)	35.8	CIBSE SHR MAX	1.00



C Range: 0 - 360DEG
C Interval: 10.0DEG
Test Speed: HIGH
Temperature: 25.5DEG
Operators: K-LITE
Test Date: 20 August 2024

γ Range: 0 - 180DEG
γ Interval: 1.0DEG
Test System: EVERFINE GO-R5000_V2 SYSTEM V2.00.417
Humidity: 42.7%
Test Distance: 2.001m [K=1.0000]
Remarks: